



# DYNAMIC PORTFOLIO LIMITED

**(Member of The Nigerian Stock Exchange)**

Registered by Securities and Exchange Commission

## DAILY STOCK MARKET WATCH

### (About The Market Today 02/07/09)

Central Bank of Nigeria Governor's statement on the likely reduction in the number of existing Banks to 15 have prompted investors to have a rethink on Bank's stocks.

Investors were seen to be in panic disposal of their Bank stocks last week which caused significant contraction in market indicators.

Market Capitalization had closed N6,212.04 billion from N6,207.17 today indicating a rise of N4.87 billion.

Similarly, the all share index rose by 21.35 to close at 27,238.94 points from 27,217.59.

Market patronage in terms of **Volume** of shares exchanged by investors rose by 131.68 million ordinary shares or 31.25 percent when compared with the position in the last trading day. In essence, an aggregate of 553.08 million ordinary shares were traded in 9,226 deals today as against a volume of 421.40 million traded in 9,620 deals in the previous transaction.

Turnover by value was on the upswing like volume as it closed at N4.09 billion; N0.03 billion or 0.74 percent rise as against N4.06 billion worth of stocks traded yesterday.

Table 1  
**Market Statistics**

	Today 02/07/2009	Previous day 01/07/2009	% Change
NSE All-Share Index	27,238.94	27,217.59	0.08
Total Deals	9,226	9,620	-4.10
Volume Traded (M)	553.08	421.40	31.25
Value Traded (N'B)	4.09	4.06	0.74
Turn Over Ratio %	0.08	0.07	14.29% Change Point
Mkt. Capt. (N'B)	6,212.04	6,207.17	0.08

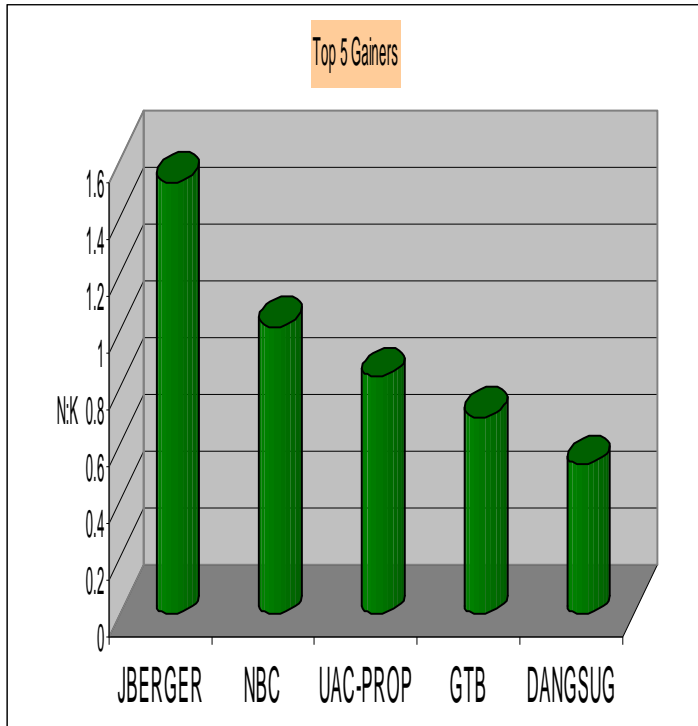
**Julius Berger Plc** lead the top gainers list again as the stock added N1.53 or 4.95 percent to its share price to close the market at N30.90 from its opening price of N32.43. **Nigerian Bottling Company Plc** came second on the list, having gained N1.02 or 5.00 percent as it opened and closed the day at N20.40 and N21.43 respectively.

Table 2

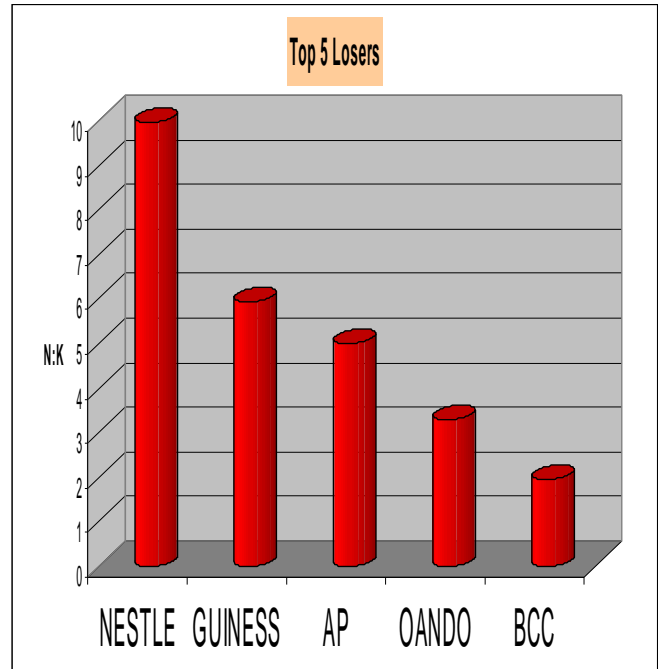
Stock	Opening Price (N:K)	Closing Price (N:K)	Absolute Change (N:K)	% rise
JBERGER	30.90	32.43	+1.53	4.95
NBC	20.40	21.43	+1.02	5.00
UAC-PROP	17.86	18.70	+0.84	4.70
GUARANTY	14.00	14.70	+0.70	5.00
DANGSUGAR	16.97	17.50	+0.53	3.12

Figure 1

**Top 5 Price Gainers**



**Top 5 Price Losers**



On the losers' chart, **Nestle Plc** lead the table for the day as the company share price declined by N9.95 or 5.00 percent to close the market at N189.05 per share, from it opening price of N199.00. Followed on the Chart was **Guinness Plc** that lost N5.95 or 4.39 percent to close the day at N129.50 per share.

**Trading Activities (Sectors/Individuals)**

The **Bank sector** emerges as the top traded Sector today in volume among the 30 listed sectors in the Nigeria Stock Exchange Floor. The sector recorded 291.76 million ordinary shares traded to control 52.75 percent of the aggregate volume of shares traded. The **Insurance sector**, with 172.04 million ordinary shares, traded trailed behind the Insurance sector which represents 31.11 percent of the total volume traded.

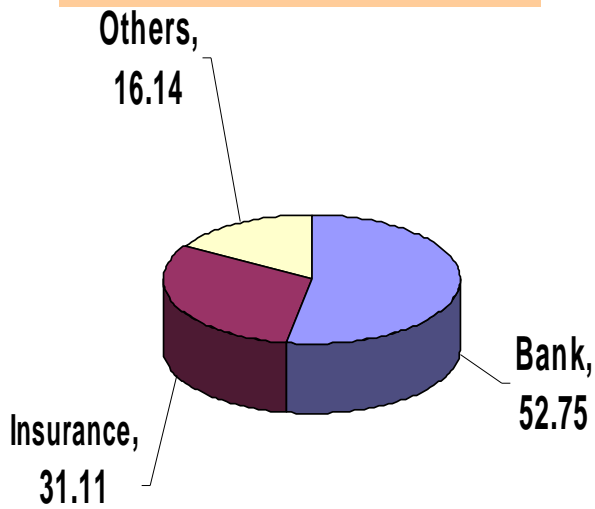
Table 3

Stock	Opening Price (N:K)	Closing Price (N:K)	Absolute Change (N:K)	% drop
NESTLE	199.00	189.05	-9.95	-5.00
GUINNESS	135.45	129.50	-5.95	-4.39
AP	104.50	99.50	-5.00	-4.78
OANDO	92.40	89.11	-3.29	-3.56
BCC	44.96	43.00	-1.96	-4.36

Figure 2

Figure 3

Volume Traded: Percentage Contribution by Sector



**Access Bank Plc** emerges first as the most patronized stock for the day. Investors traded 59.19 million ordinary shares to controlled 20.29 percent of the aggregate volume traded in the **Banking sector** and 10.70 percent of the entire market. **First Bank Plc** (41.39 million ordinary shares) emerged second position on the list.

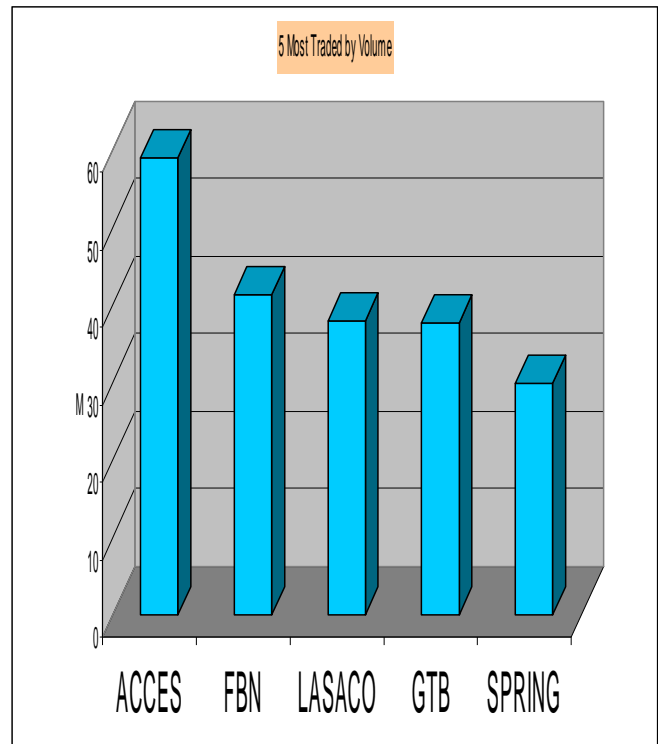
Table 4

5 Most Traded Stocks by Volume

Stock	Price (N: K)	Volume (M)
ACCES	7.99	59.19
FIRSTBANK	22.00	41.39
LASACO	0.94	38.04
GURANTY	14.70	37.91
SPRINGBANK	5.59	30.07

Figure 4

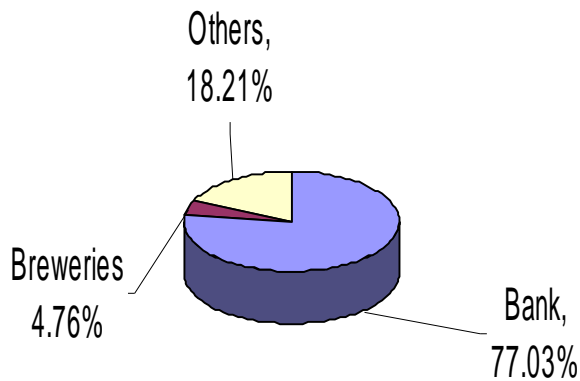
5 Most traded Stocks by Volume



The **Banking** sector was the most active in value traded as the stocks worth N3,147.95 million for a 77.03 percent of the aggregate traded value for the day. The **Breweries** sector (N194.64 million) followed, representing 4.76 percent of the overall value traded.

Figure5

**Value Traded: Percentage Contribution by sector**



Analysis on individual company basis showed that **First Bank Plc** led the highest trading by value at N941.04 million today. The figure controlled 29.89 percent of total traded value in the Banking sector and 23.03 percent of the overall value traded for the whole market. **Guaranty Trust Bank Plc** (N550.69 million) was the second highest.

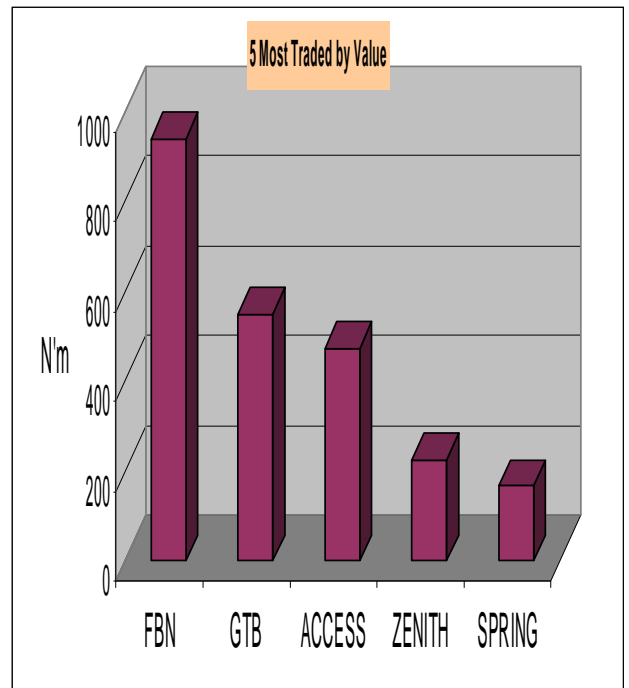
Table 5

**5 Most Traded Stocks by Value**

Stock	Price (N:K)	Value (N'M)
FIRSTBANK	22.00	941.04
GUARANTY	14.70	550.69
ACCESS	7.99	474.12
ZENITHBANK	15.20	225.93
SPRINGBANK	5.59	168.12

Figure 6

**5 Most Traded Stocks by Value**



**Market Capitalization:**

**First Bank of Nigeria Plc** is the highest capitalized stock at N543.96 billion today. This was followed by **Zenith Bank Plc** with N381.78 billion. **Nigerian Breweries Plc** N376.31 billion, **UBA Plc** with N316.77 billion and **Guaranty Trust Bank Plc** N277.63 billion to maintained the third, fourth and fifth positions respectively.

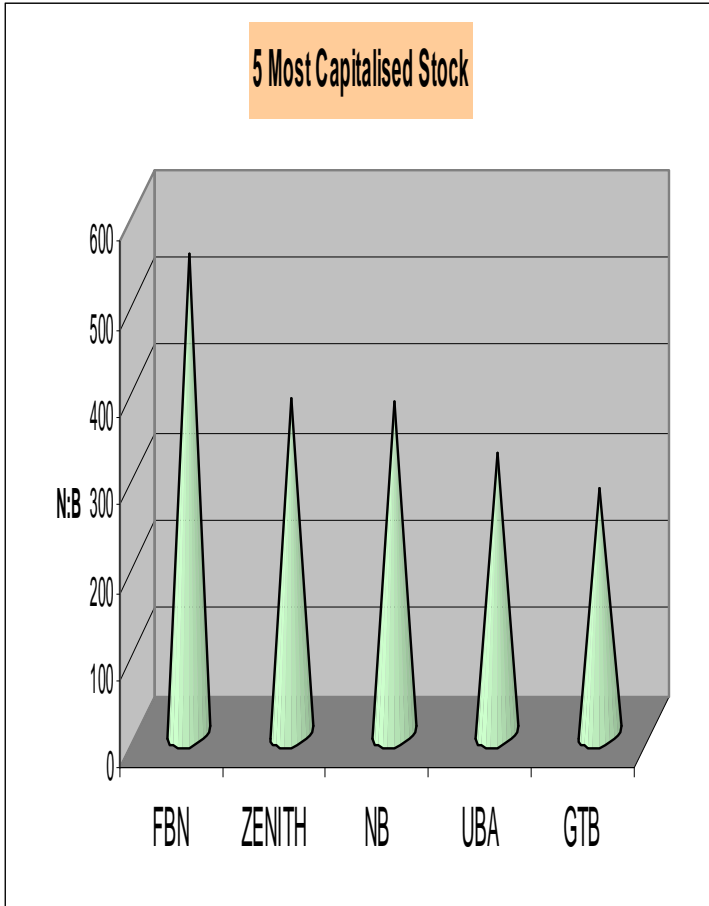
Table 6

**5 Most Capitalized Stocks**

Stock	Mkt. Capt. (N'B)	% of Top 5	% of Total
<b>FIRSTBANK</b>	<b>543.96</b>	<b>28.68</b>	<b>8.76</b>
<b>ZENITHBANK</b>	<b>381.78</b>	<b>20.13</b>	<b>6.15</b>
<b>NB</b>	<b>376.31</b>	<b>19.84</b>	<b>6.06</b>
<b>UBA</b>	<b>316.77</b>	<b>16.70</b>	<b>5.10</b>
<b>GUARANTY</b>	<b>277.63</b>	<b>14.64</b>	<b>4.47</b>
<b>Total</b>	<b>1,896.45</b>	<b>100.00</b>	<b>30.53</b>
<b>Others</b>	<b>4,315.59</b>		<b>69.47</b>
<b>Grand Total</b>	<b>6,212.04</b>		<b>100</b>

Figure 7

5 Most Capitalized Stocks



Monetary Policy Rate: 8.00 %

Business News

Term of the day

**STOCK SPLIT**

A corporate action in which a company's existing shares are divided into multiple shares. Although the number of shares outstanding increases by a specific multiple, the total naira value of the shares remains the same compared to pre-split amounts, because no real value has been added as a result of the split.

Dynamic House: Penthouse & 2<sup>nd</sup> Floor,  
20 Campbell Street, Lagos Island, Lagos  
P.O. Box 75649, Victoria Island  
Lagos,  
Nigeria.  
234-1-2702508  
[www.dynamicportfolio.com](http://www.dynamicportfolio.com)