



# DYNAMIC PORTFOLIO LIMITED

**(Member of The Nigerian Stock Exchange)**

Registered by Securities and Exchange Commission

## DAILY STOCK MARKET WATCH

### (About The Market Today 28/05/09)

Market activities today reflected a positive position, a sustainable trend witness from the previous day trading, Investors are full of high expectations most especially as confidence in the market is gradually taken its step for persistent development.

A cursory look at the overall transactions traded today shows that The Nigerian Stock Exchange (NSE) All-share index rose by 1,023.44 points or 3.57 percent to stand at 29,700.24 points in contrast to 28,676.80 points posted in previous day's transaction. The index posted a gain of 2.63 percent in the previous trading day.

Similarly, market patronage in terms of **Volume** of shares exchanged by investors robust 0.15 million or 0.03 percent when compared with the position in the preceding day. In essence, an aggregate of 435.59 million ordinary shares were traded in 6,895 deals today as against a volume of 435.44 million executed in 8,159 deals yesterday.

Similarly, Turnover by **Value** was on the upswing today as it settles at 4.30 billion; a N1.04 billion or 31.90 percent increase as against N3.26 billion worth of stocks traded in the previous day.

**Market Capitalization** of the listed 207 equities appreciated by N232.93 billion or 3.57 percent to close the day at N6, 759.64 billion in contrast to N6,526.71 billion posted as at May 27, 2009. The market capitalisation recorded a N167.12 billion or 2.63 percent increase in the preceding day.

Table 1

### Market Statistics

	Today 28/05/09	Previous 27/05/09	% Change
NSE All-Share Index	29,700.24	28,676.80	3.57
Total Deals	6,895	8,159	-18.23
Volume Traded (M)	435.59	435.44	0.03
Value Traded (N'B)	4.30	3.26	31.90
Turn Over Ratio %	0.06	0.05	0.01% Change Point
Mkt. Capt. (N'B)	6,759.64	6,526.71	3.57

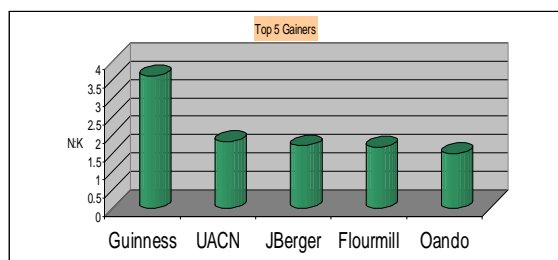
**Guinness Nigeria Plc** emerged the top position on the gainers list as the stock added N3.61 or 3.14 percent to its share price to close the market at N118.50 from its opening value of N114.89. **UACN Plc** came second on the list, having gained N1.82 or 4.99 percent as it opened and closed the day at N36.50 and N38.32 respectively.

Table 2

Stock	Opening Price (N:K)	Closing Price (N:K)	Absolute Change (N:K)	% rise
Guinness	114.89	118.50	3.61	3.14
UACN	36.50	38.32	1.82	4.99
JBerger	34.39	36.10	1.71	4.97
Flourmill	33.70	35.38	1.68	4.99
Oando	95.00	96.50	1.50	1.58

Figure 1

### Top 5 Price Gainers



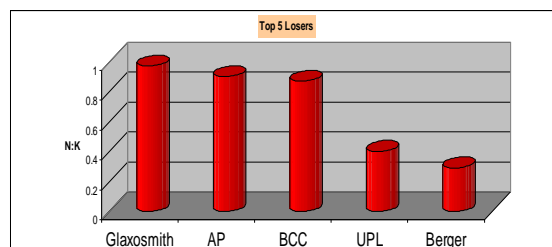
A cross section on the loser's table witness that **Glaxosmithkline Consumer Nigeria Plc** top the loser's chart for the day as the company declined by N0.97 or 4.98 percent to close the market at N18.51 per share, from it opening value of N19.48. This was followed by **African Petroleum Plc** which lost N0.90 or 1.04 percent to close the day at N85.50 per share.

Table 3

Stock	Opening Price (N:K)	Closing Price (N:K)	Absolute Change (N:K)	% drop
Glaxosmith	19.48	18.51	0.97	4.98
AP	86.40	85.50	0.90	1.04
BCC	37.52	36.65	0.87	2.32
UPL	8.25	7.85	0.40	4.85
Berger	6.25	5.96	0.29	4.64

Figure 2

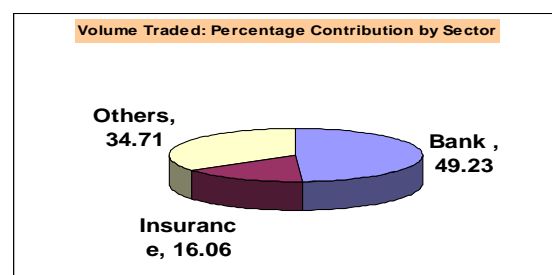
### Top 5 Price Losers



### Trading Activities (Sectors/Individuals)

The **Banking sector** was supreme over others in terms of volume of shares traded by investors as experienced in today's trading activities. The sector recorded 212.97 million ordinary shares traded to control largely 49.23 percent of the aggregate volume of shares traded. The **Insurance sector**, with 69.48 million ordinary shares, traded trailed behind the Banking sector which represented 16.06 percent of the total volume traded.

Figure 3



**United Bank for Africa Plc** came first as the most patronized stock for the day. Investors traded 37.74 million ordinary shares to controlled 17.72 percent of the aggregate volume traded in the Banking sector and 8.03 percent of the entire market. **Guaranty Trust Bank Plc** (26.67 million ordinary shares) emerged second position on the list.

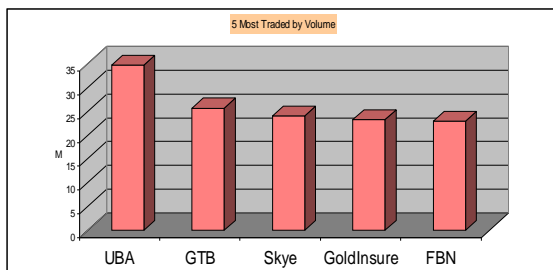
Table 4

5 Most Traded Stocks by Volume

Stock	Price (N: K)	Volume (M)	Value (N'M)
UBA	16.59	34.74	569.50
GTB	13.53	26.67	347.12
SkyeBank	6.81	24.07	163.95
GoldInsure	0.56	23.20	12.99
FBN	23.68	22.94	543.10

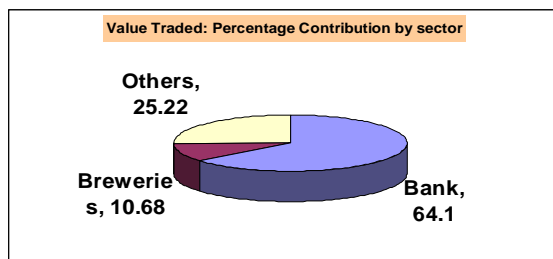
Figure 4

5 Most traded Stocks by Volume



The **Banking** sector was the most active in value terms as it traded on stocks worth N2,755.82 million for a 64.10 percent of the aggregate traded value for the day. The **Breweries** sector (N459.15 million) followed, representing 10.68 percent of the overall value traded.

Figure5



Analysis on individual company basis showed that **United Bank for Africa Plc** pulled the highest trading by value at N569.57 million today. The figure controlled 20.67 percent of total traded value in the Banking sector and 13.25 percent of the overall value traded for the whole market. **First Bank of Nigeria Plc** (N543.10 million) was the second highest.

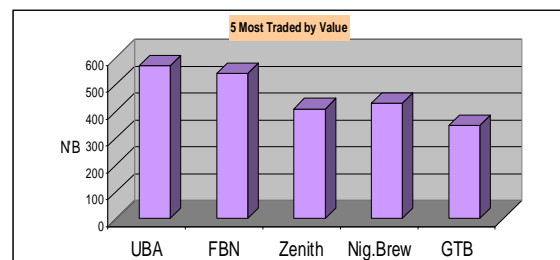
Table 5

5 Most Traded Stocks by Value

Stock	Price (N:K)	Volume (M)	Value (N'M)
UBA	16.59	34.74	569.57
FBN	23.68	22.94	543.10
Zenith	26.46	15.49	409.88
Nig.Brew	50.30	8.80	431.40
GTB	13.53	25.66	347.12

Figure 6

5 Most Traded Stocks by Value



### Market Capitalization:

**First Bank of Nigeria Plc** is the highest capitalized stock at N585.50 million today. This was followed by **Nigeria Breweries Plc** with N380.40 billion. **Intercontinental Bank Plc** (N256.60 billion), **Guaranty Trust Bank Plc** (204.43 billion) and **Ecobank Bank Plc** (N201.82 billion) to maintained the third, fourth and fifth positions respectively.

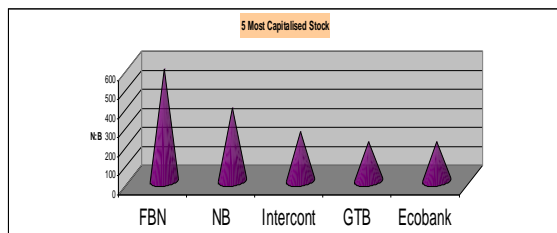
Table 6

5 Most Capitalized Stocks

Stock	Mkt. Capt. (N'B)	% of Top 5	% of Total
<b>FBN</b>	<b>585.50</b>	<b>35.95</b>	<b>13.62</b>
<b>NB</b>	<b>380.40</b>	<b>23.36</b>	<b>8.85</b>
<b>Intercont</b>	<b>256.60</b>	<b>15.75</b>	<b>5.97</b>
<b>GTB</b>	<b>204.43</b>	<b>12.55</b>	<b>4.76</b>
<b>Ecobank</b>	<b>201.82</b>	<b>12.39</b>	<b>4.69</b>
<b>Total</b>	<b>1,628.75</b>	<b>100</b>	<b>37.89</b>
<b>Others</b>	<b>2,670.2</b>		<b>62.11</b>
<b>Grand Total</b>	<b>4,298.95</b>		<b>100</b>

Figure 7

5 Most Capitalized Stocks



Monetary Policy Rate: 8.00 %

Business News

No News for today

Term for the Day

**Stock Switching**

If you liquidate a short term or long term position by exchange of one stock for another in your stock investment, the process is known as switching. You could resort to this method in

stock investment, if you feel that the stock you acquire has good growth prospects or would have a higher yield. Sometimes, there would be some excess cash when stock switching is done and this could be utilized for augmenting your stock investment by buying other valued stocks.

Dynamic House: Penthouse & 2<sup>nd</sup> Floor,  
 20 Campbell Street, Lagos Island, Lagos  
 P.O. Box 75649, Victoria Island  
 Lagos,  
 Nigeria.  
 234-1-2702508  
[www.dynamicportfolio.com](http://www.dynamicportfolio.com)