



# DYNAMIC PORTFOLIO LIMITED

**(Member of The Nigerian Stock Exchange)**

Registered by Securities and Exchange Commission

## DAILY STOCK MARKET WATCH

### (About The Market Today 01/07/09)

The Nigerian Stock Exchange (NSE) all share index which is the major barometer for the performance of the market, closed at 27,217.59 rise from the opening value of 26,861.55

Also the Nigerian Stock Exchange (NSE) capitalization which measures the value of equities closed at N6,207.17 billion indicating a rise of N81.20 billion today.

Market patronage in terms of **Volume** of shares exchanged by investors dropped by 127.65 million ordinary shares or 23.25 percent when compared with the position in the last trading day. In essence, an aggregate of 421.40 million ordinary shares were traded in 9,620 deals today as against a volume of 549.05 million traded in 10,595 deals in the previous transaction.

Turnover by value was on the downswing like volume as it closed at N4.06 billion; N0.05 billion or 1.22 percent dropped as against N4.11 billion worth of stocks traded yesterday.

Table 1

### Market Statistics

	Today 01/07/2009	Previous day 30/06/2009	% Change
NSE All-Share Index	27,217.59	26,861.55	1.33
Total Deals	9,620	10,595	-9.20
Volume Traded (M)	421.40	549.05	-23.25
Value Traded (N'B)	4.06	4.11	-1.22
Turn Over Ratio %	0.07	0.08	-12.50% Change Point
Mkt. Capt. (N'B)	6,207.17	6,125.97	1.33

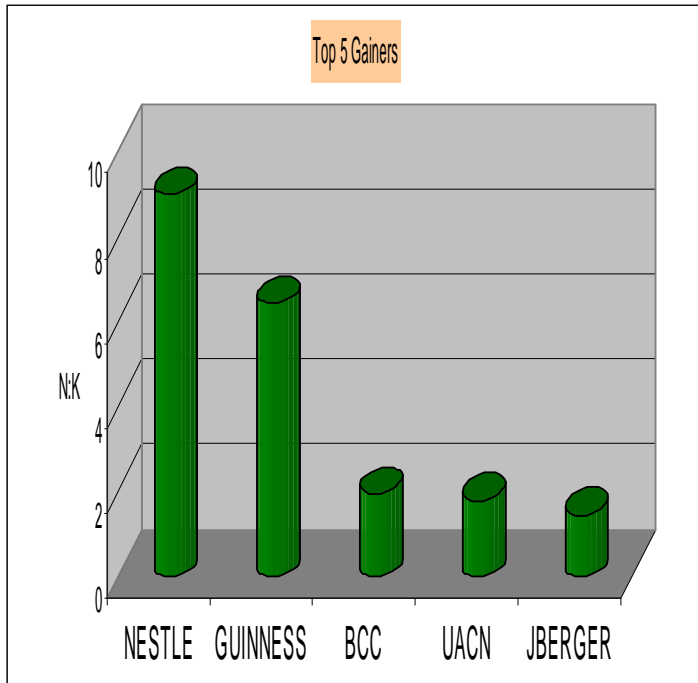
**Nestle Plc** lead the top gainers list again as the stock added N9.01 or 4.74 percent to its share price to close the market at N199.00 from its opening price of N189.99. **Guinness Plc** came second on the list, having gained N6.45 or 5.00 percent as it opened and closed the day at N129.00 and N135.45 respectively.

Table 2

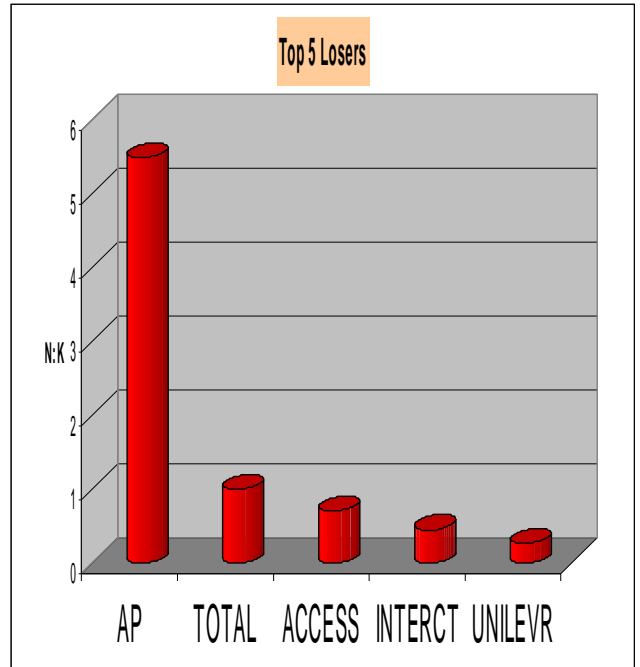
Stock	Openin g Price (N:K)	Closing Price (N:K)	Absolut e Change (N:K)	% rise
NESTLE	189.99	199.00	+9.01	4.74
GUINNESS	129.00	135.45	+6.45	5.00
BCC	43.00	44.96	+1.96	4.56
UACN	36.51	38.33	+1.82	4.98
JBERGER	29.43	30.90	+1.47	4.99

Figure 1

**Top 5 Price Gainers**



**Top 5 Price Losers**



On the losers' chart, **Total Plc** lead the table for the day as the company share price declined by N3.75 or 2.13 percent to close the market at N172.25 per share, from it opening price of N176.00. Followed on the Chart was **Conoil Plc** that lost N3.07 or 4.99 percent to close the day at N58.43 per share.

Table 3

Stock	Opening Price (N:K)	Closing Price (N:K)	Absolute Change (N:K)	% drop
AP	110.00	104.50	-5.50	-5.00
TOTAL	176.00	175.00	-1.00	-0.57
ACCESS	9.05	8.35	-0.70	-7.73
INTERCONT	9.10	8.65	-0.45	-4.95
UNILEVER	13.77	13.51	-0.26	-1.89

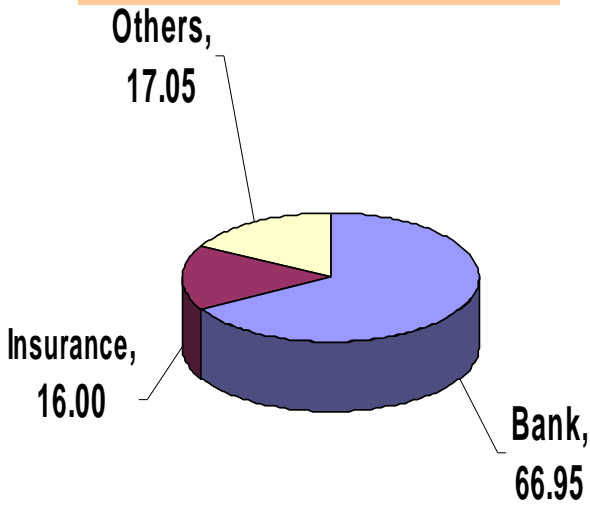
Figure 2

**Trading Activities (Sectors/Individuals)**

The **Bank sector** emerges as the top traded Sector today in volume among the 30 listed sectors in the Nigeria Stock Exchange Floor. The sector recorded 282.12 million ordinary shares traded to control 66.95 percent of the aggregate volume of shares traded. The **Insurance sector**, with 67.43 million ordinary shares, traded trailed behind the Insurance sector which represents 16.00 percent of the total volume traded.

Figure 3

Volume Traded: Percentage Contribution by Sector



**United Bank for Africa (UBA) Plc** emerges first as the most patronized stock for the day. Investors traded 63.41 million ordinary shares to controlled 22.48 percent of the aggregate volume traded in the **Banking sector** and 15.04 percent of the entire market. **First Bank Plc** (47.15 million ordinary shares) emerged second position on the list.

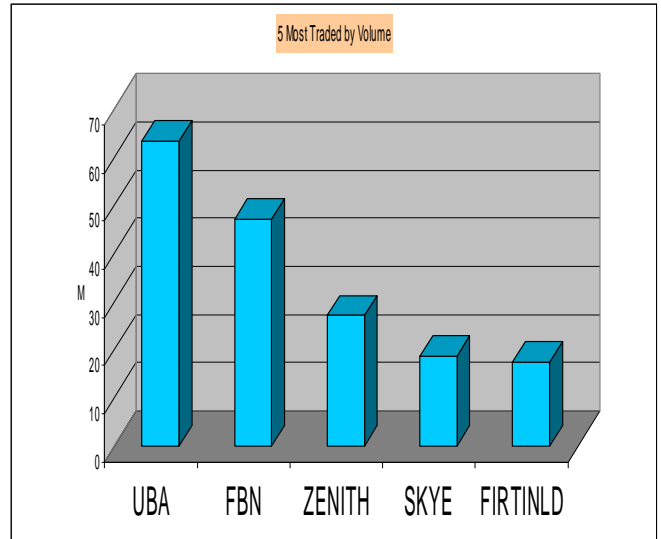
Table 4

5 Most Traded Stocks by Volume

Stock	Price (N: K)	Volume (M)
UBA	14.22	63.41
FIRSTBANK	22.50	47.15
ZENITHBANK	15.00	27.17
SKYEBANK	7.07	18.74
FIRSTINLND	2.80	17.59

Figure 4

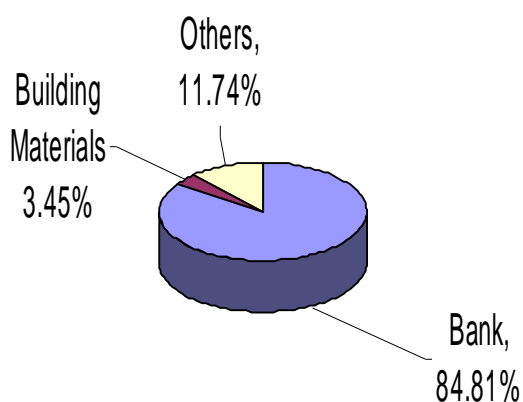
5 Most traded Stocks by Volume



The **Banking** sector was the most active in value traded as the stocks worth N3,441.16 million for a 84.81 percent of the aggregate traded value for the day. The **Building** sector (N140.09 million) followed, representing 3.45 percent of the overall value traded.

Figure5

### Value Traded: Percentage Contribution by sector



Analysis on individual company basis showed that **First Bank Plc** led the highest trading by value at N1,069.64 million today. The figure controlled 31.08 percent of total traded value in the Banking sector and 26.36 percent of the overall value traded for the whole market. **United Bank for Africa Plc** (N897.70 million) was the second highest.

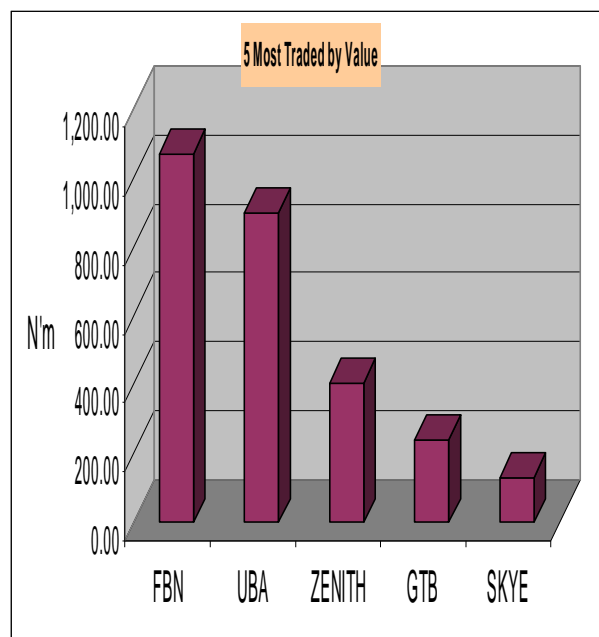
Table 5

#### 5 Most Traded Stocks by Value

Stock	Price (N:K)	Value (N'M)
FIRSTBANK	22.50	1,069.64
UBA	14.22	897.70
ZENITHBANK	15.00	406.26
GUARANTY	14.00	242.25
SKYEBANK	7.07	131.36

Figure 6

#### 5 Most Traded Stocks by Value



### Market Capitalization:

**First Bank of Nigeria Plc** is the highest capitalized stock at N556.32 billion today. This was followed by **Zenith Bank Plc** with N376.76 billion. **Nigerian Breweries Plc** N374.35 billion, **UBA Plc** with N306.43 billion and **Guaranty Trust Bank Plc** N264.41 billion to maintained the third, fourth and fifth positions respectively.

Table 6

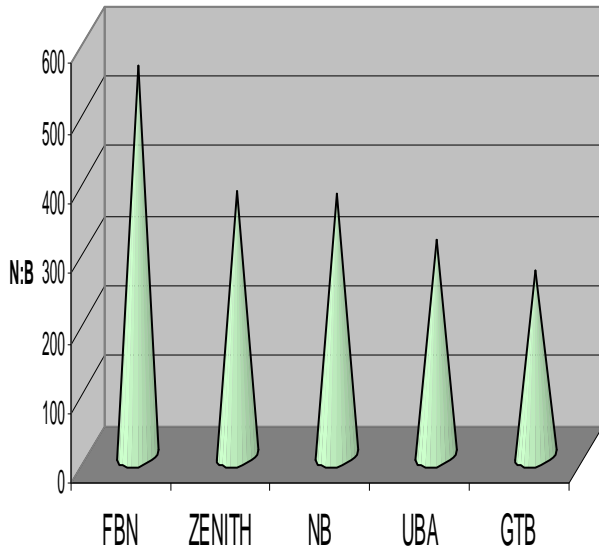
#### 5 Most Capitalized Stocks

Stock	Mkt. Capt. (N'B)	% of Top 5	% of Total
<b>FIRSTBANK</b>	<b>556.32</b>	<b>29.62</b>	<b>8.96</b>
<b>ZENITHBANK</b>	<b>376.76</b>	<b>20.06</b>	<b>6.07</b>
<b>NB</b>	<b>374.35</b>	<b>19.93</b>	<b>6.03</b>
<b>UBA</b>	<b>306.43</b>	<b>16.31</b>	<b>4.94</b>
<b>GUARANTY</b>	<b>264.41</b>	<b>14.08</b>	<b>4.26</b>
<b>Total</b>	<b>1,878.27</b>	<b>100.00</b>	<b>30.26</b>
<b>Others</b>	<b>4,328.90</b>		<b>69.74</b>
<b>Grand Total</b>	<b>6,207.17</b>		<b>100</b>

Figure 7

#### 5 Most Capitalized Stocks

### 5 Most Capitalised Stock



Monetary Policy Rate: 8.00 %

### Business News

#### Term of the day

#### **FOCUS LIST:**

In essence, a focus list is a virtual portfolio that research departments use to battle it out against other firms for bragging rights in stock picking. Focus lists are also great marketing tools. Much like with mutual funds, you'll often hear about the lists with strong performance (like portfolios that outperform a specific index), but never about those that had a bad year

Dynamic House: Penthouse & 2<sup>nd</sup> Floor,  
20 Campbell Street, Lagos Island, Lagos  
P.O. Box 75649, Victoria Island  
Lagos,  
Nigeria.  
234-1-2702508  
[www.dynamicportfolio.com](http://www.dynamicportfolio.com)